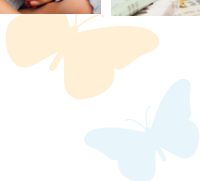




YOU BELONG AT THE WFL!

Through its administration, staff, Trustees, and supporting organizations, the Wellesley Free Library is wholly committed to the idea of supporting and welcoming all patrons. Our mission “to connect our community to each other and to the world” speaks to the work of bringing people together to forge human relationships and build understanding. The WFL provides information, materials, programs, services, and spaces through the lenses of equity and inclusion for all.



REPORT to the COMMUNITY 2023

CONNECTING OUR COMMUNITY



Jamie Jurgensen, Director



Marla Robinson, Chair



Ann Hawley



Linshi Li



Maura Murphy



Ann Rappaport



Diane Savage

A MESSAGE FROM THE TRUSTEES & DIRECTOR

Libraries are facing challenging times and the Wellesley Free Library (WFL) is no exception. We pledge to uphold our commitment to intellectual freedom, inclusivity and excellent service, and we thank the community for its support of our efforts. “Connecting our community to each other and to the world” is what we do. The Library anticipates, prioritizes and takes the initiative to meet the needs of our ever-evolving community. We got you!

*In 2023, the WFL created its **2024-2028 Strategic Plan** through the work of a Strategic Planning Committee that included Library Trustees, Library employees, WFL supporting organization members and Wellesley residents. The community participated in a survey, focus groups and interviews. These efforts resulted in a plan that has four major goals: Promoting free and convenient use of resources and reducing barriers to service; Designing programs and educational opportunities which reflect the evolving needs of the community; Improving space within the buildings; and Fostering a fearless, flexible, and fun workforce. We are excited to share our progress and success with you in the months ahead.*

Community Gathering Place,

BORROW BOOKS & BEYOND



EXHIBITS



ESOL



SPECIAL THANKS

The WFL was honored to be named a “Star Library,” one of 258 in the US for 2022 by Library Journal. As this designation is based partly on a library’s level of funding, Wellesley’s taxpayers and the Library’s supporting organizations are due thanks for helping the WFL achieve “star” status. The **Wellesley Free Library Foundation** spearheads major fundraising efforts such as their sold out Books in Bloom event in the spring of 2023. The **Friends of the Wellesley Free Libraries**, a volunteer-driven community membership organization, shattered all previous records at their 2023 spring book sale. The Friends and the Foundation work in concert to encourage private philanthropy on behalf of the Library, creating new opportunities and enriching the menu of services that make the WFL such an outstanding community resource. Thank you to all of the dedicated members of this partnership!

TO EACH OTHER AND THE WORLD

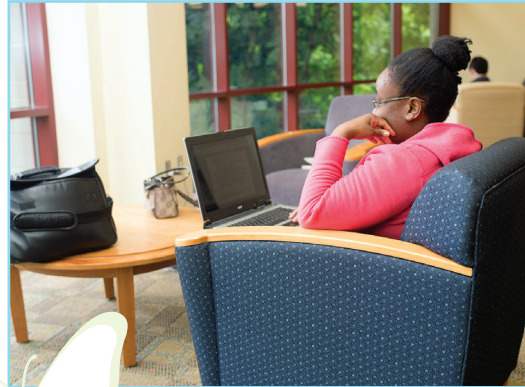
Cultural Destination, Gateway to Ideas

PROGRAMS



Photo by Briansmithboston.com

PLACES TO STUDY



PLACES TO PLAY



TECHNOLOGY CLASSES



EVENTS



YOUR WELLESLEY FREE LIBRARIES

"The only thing that you absolutely have to know, is the location of the library." Albert Einstein

The WFL connects our community through three physical locations and a fourth virtual location, wellesleyfreelibrary.org. The spectacular **Main Library** (530 Washington Street) is the heart and hub of Wellesley, providing patrons with places and possibilities for unlimited opportunities. **Hills Branch Library** (210 Washington Street) is a charming fieldstone building listed on the National Register of Historic Places, a casual and welcoming destination cherished by generations of neighborhood residents. The **Fells Branch Library** (210 Weston Road), built in 1858 as a one-room school house, has metamorphosed into a magical space of colorful murals and an enchanting garden. Fells is a delightful place to visit at any season.



WELLESLEY FREE LIBRARY

530 Washington Street
Wellesley, MA 02482

NONPROFIT ORG
U.S. POSTAGE
PAID
XXX

OUR VALUES

We SERVE as a community gathering place, cultural destination, and gateway to ideas.

We PLEDGE to be welcoming and responsive to our patrons.

We ENSURE a culture of belonging and build equity within the community.

We PROMOTE universal access to knowledge and ideas.

We INSPIRE lifelong learning.

We ENRICH our community through diverse programs and offerings for all ages.

We DEFEND intellectual freedom and user privacy.

We ACQUIRE materials responsive to community needs and desires.

We PRACTICE ethically and fiscally responsible stewardship of public and private resources.

We EMPOWER our employees to create a culture of curiosity, creativity, and innovation.

We INVEST in our employees' professional development.

We COMMIT to excellence in our services, facilities, and collections.

We APPRECIATE our support organizations whose generous gifts provide enhancements for all patrons.

We COLLABORATE with other Town organizations and institutions.

We ENCOURAGE staff, Trustees, and volunteers to be fearless, flexible, and fun.

We ADAPT, we LEAD, we TRANSFORM.



STAY CONNECTED
TO THE THINGS
YOU LOVE



www.wellesleyfreelibrary.org